

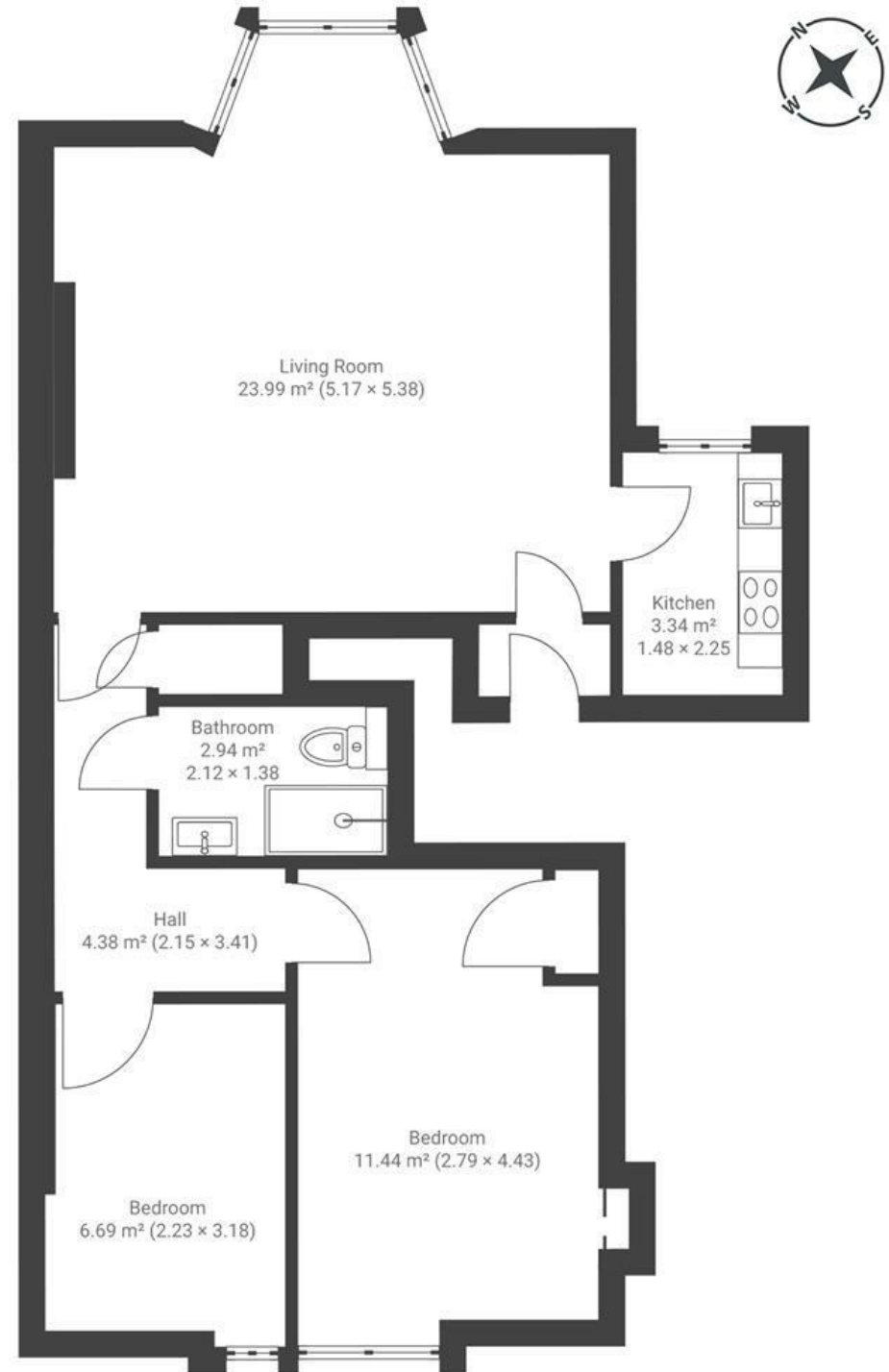
# Springfield Road

## COTHAM

APPROXIMATE FLOOR AREA  
58 SQM / 624 SQFT



GROUND FLOOR



Boardwalk

# Springfield Road

COTHAM, BRISTOL



£335,000



2 Bedrooms



BS6 5SW



1 Bathrooms

*"We've loved having morning coffee watching the beautiful sunrise through the bay window, soaking up the rays as they illuminate the amazing views over Bristol."*

